



## T93 Duramax TCM Flash Instructions

The TCMs have a different licensing protocol than the ECM, make sure to follow these instructions to properly license the TCM. VSE will not be responsible for incorrect licensing and 4 additional credits will need to be purchased

**!! Important note** – DO NOT Drive your truck with the modified TCM installed unless you KNOW FOR SURE we have flashed the ECM or YOU have flashed our modified tune file into the TCM – VSE will not be held liable for damages that result from failure to follow these instructions !!

**!! Critical Step** - The relearn sequence after installing this tuned and modified TCM **must** be completed prior to driving your truck how you normally would - VSE will not be held liable for damages that result from failure to follow these instructions!!

### Pre-Install Instructions

1. **ENSURE** YOU ARE RUNNING HP TUNERS LATEST BETA. If you are not, download it here: <https://www.hptuners.com/downloads/> (if this is your first time downloading, you will also need to install the NET 8 Desktop Runtime prior to installing the BETA software)
2. **Open** the VCM Scanner Beta.
3. Turn the truck to the **ON** position
4. With the MPVI plugged in, **Connect** to the Vehicle.
5. **Select** Vehicle Controls & Special Functions >> General.
6. **Select Replace TCM** and follow the on-screen instructions. This **MUST** be done with the STOCK TCM in the vehicle. **(Do NOT skip this step!! Valve body error codes WILL result)**
  - a. **PHOTO INSTRUCTIONS**
7. **IF** TCM has already been pre-flashed (ex. TCM or protective bag says flashed) you may skip to **Step 19**
8. **Go to** the Help tab, then **select** Resync Interface
9. Turn the ignition to the **ON** position.
10. **Select** the Read Vehicle button.
11. **Select Read**
12. Once the Read is completed, **save** the file (this file is **NEEDED** for recovery of the TCM if something were to go wrong)
  - a. E-mail the READ file to [info@runvse.com](mailto:info@runvse.com) with VIN or Order Number for safe keeping.
13. After the file is saved, **open** the modified TCM tune sent by VSE.
14. **Select** Write Vehicle
15. **Select** Show License Options
16. **Select** the Specific option for 4 Credits.
17. Once Licensed, Write Entire in the dropdown menu, then **WRITE** (2-3 minute flash process)
18. **IF** you have access to a GM tool (GM MDI) or SNAP ON Modus enter the transmission section of the tool hit “reset adaptive pressure” then hit enable fast learn. This is the best practice. Then perform step 24.

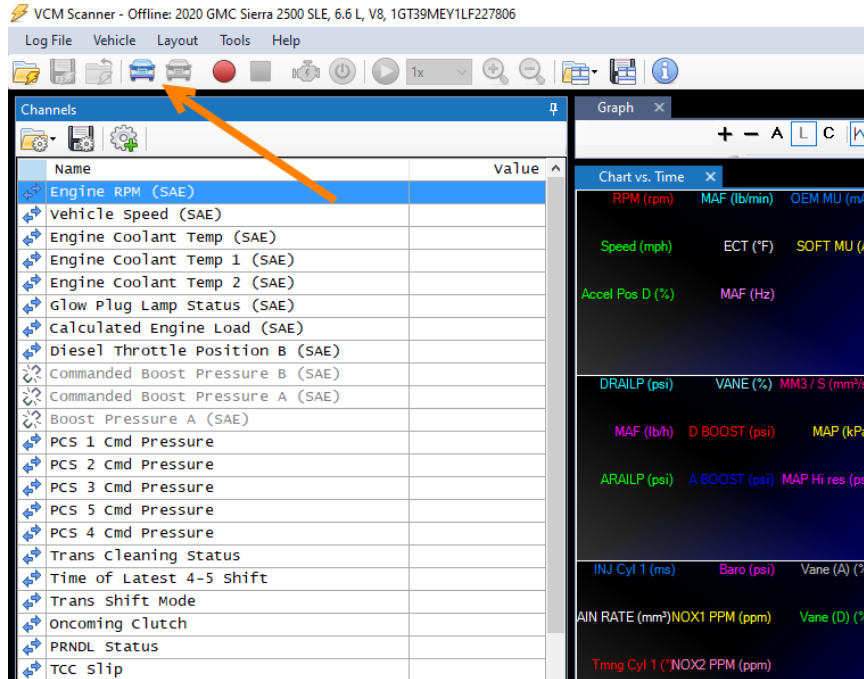
## T93 Duramax TCM Relearn Process

**!! This following process MUST BE FOLLOWED to the best of your ability!! During the relearn sequence the transmission WILL experience out of normal shift behaviour including transitioning into and out of reverse and drive. This is normal during relearn.**

19. **Start** the truck and to the best of your ability get the operating temp to 167F minimum by idling the engine.
  - a. If this is not feasible, then ensure transmission temp is above 70F.
20. **Place** the truck into drive, then into park, then into reverse, then into park.
21. **Place** the truck back into drive and accelerate up to 60-70mph at light (1/4 throttle) until in 10<sup>th</sup> gear. Perform this operation 2 times.
22. **Accelerate** up to 60-70 MPH at 1/2 throttle until in 10<sup>th</sup> gear. Perform this operation 2 times.
23. **Accelerate** up to 60-70 MPH at Full throttle until in 10<sup>th</sup> gear. Perform this operation 2 times. Use the lower power setting if you have SOTF tuning from us, or lowest power available.
24. **Exit** fast learn procedure if used in step 18. You can now drive the truck normally. It may take 200-300 miles of normal driving for transmission relearning (adaptive relearn) to complete fully. Expect the transmission to exhibit more pronounced shifting and a lighter overall feel when driving.

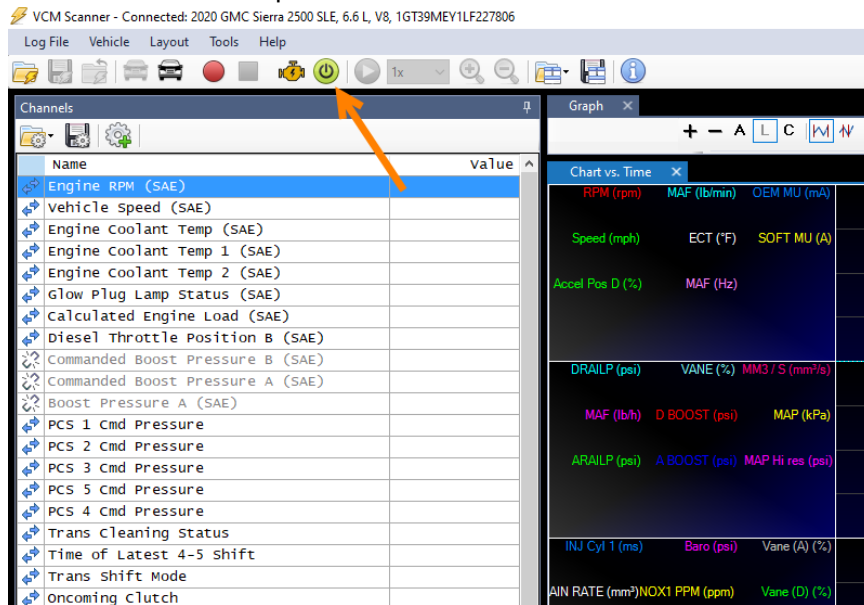
# Replace TCM Function with Pictures

1. Turn the truck to the "ON" Position and then Connect to Vehicle



a.

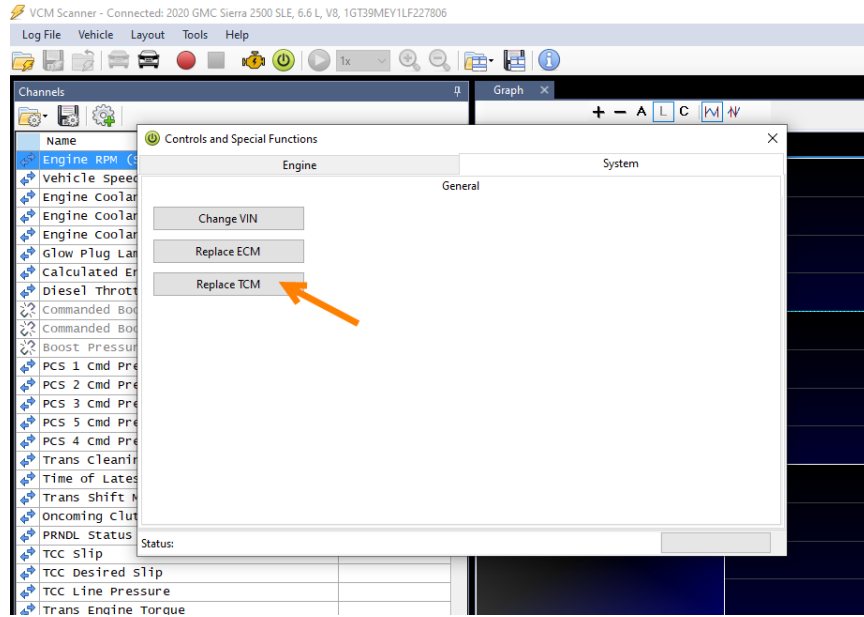
2. Select Vehicle Controls & Special Function



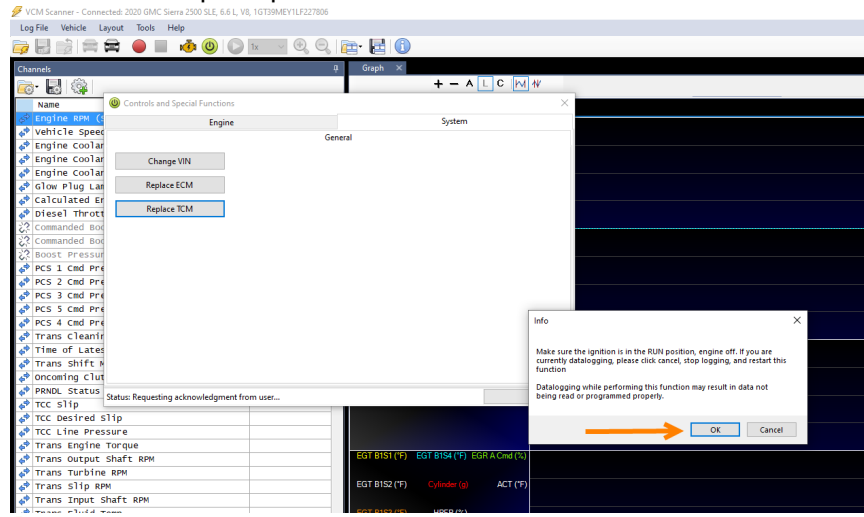
a.

3. Select the System Tab, then Replace TCM (STOCK TCM MUST BE INSTALLED)

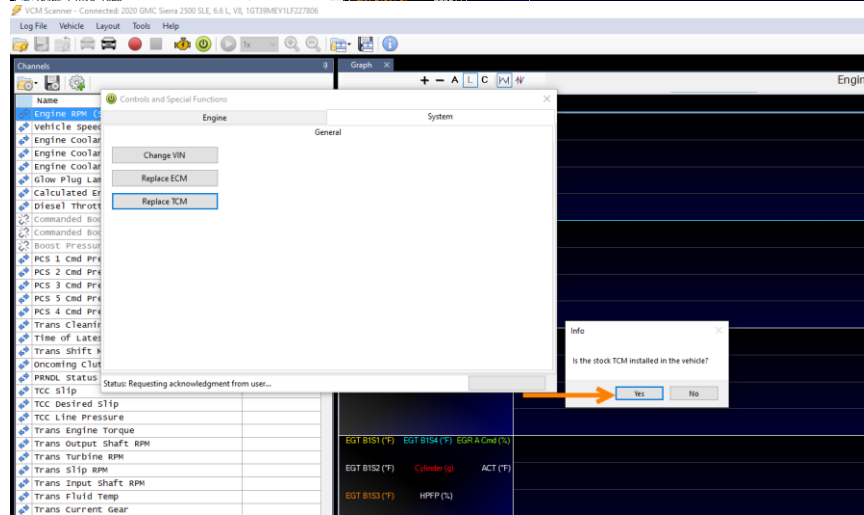
# T93 Duramax TCM Relearn Process



a. 4. Follow the on screen prompts

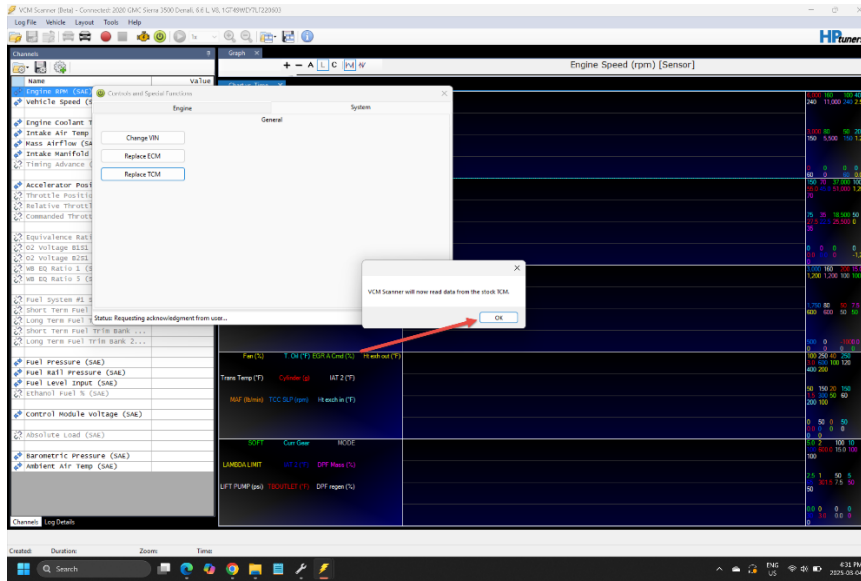


a.

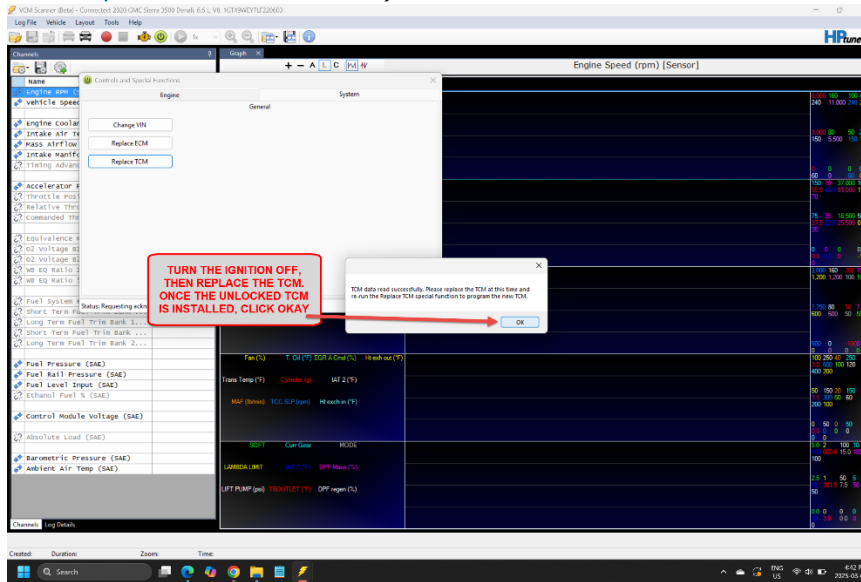


b.

# Replace TCM Function with Pictures

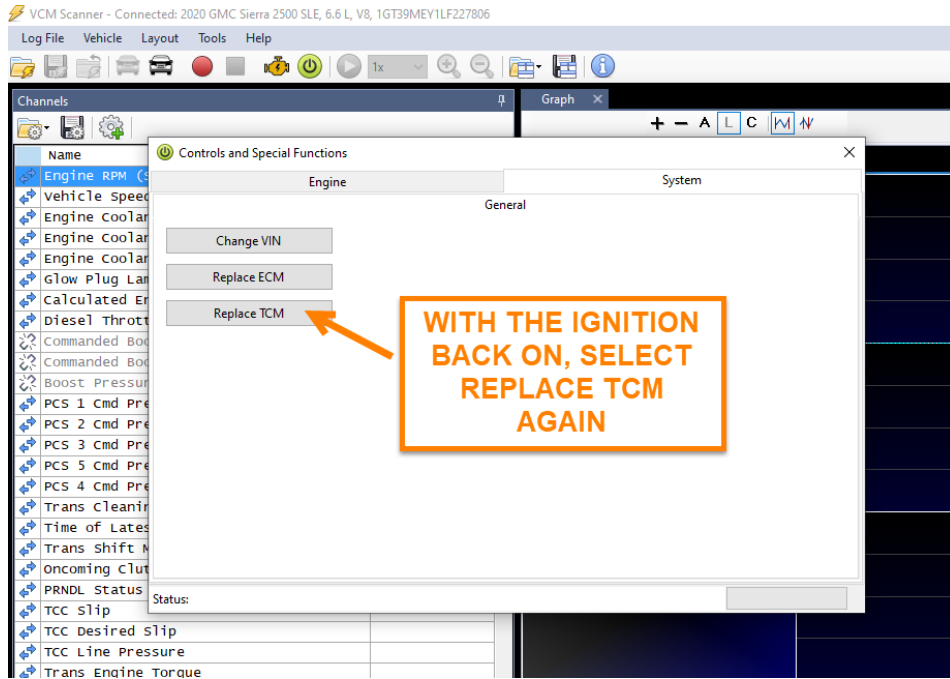


- c.
5. When the data read is completed, turn the truck off, replace the TCM, then click OK ([How to replace T93 TCM Video](#))

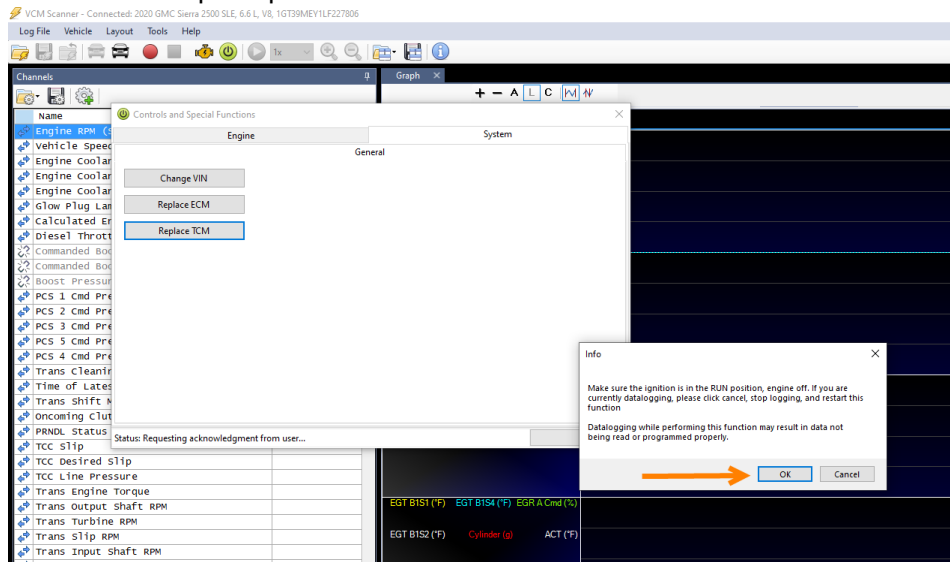


- a.
6. With the Unlocked TCM installed, select Replace TCM again

# T93 Duramax TCM Relearn Process

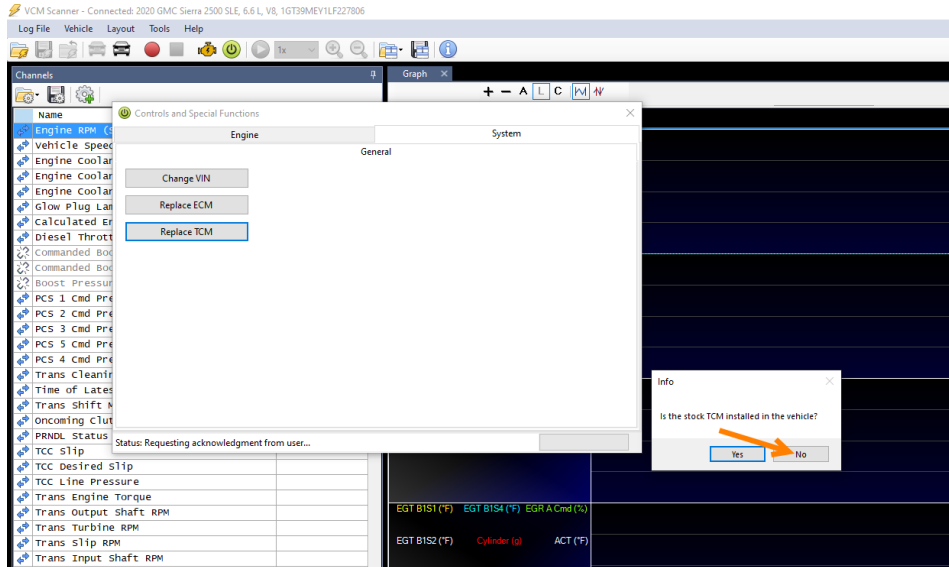


- a.
7. Follow the on screen prompts

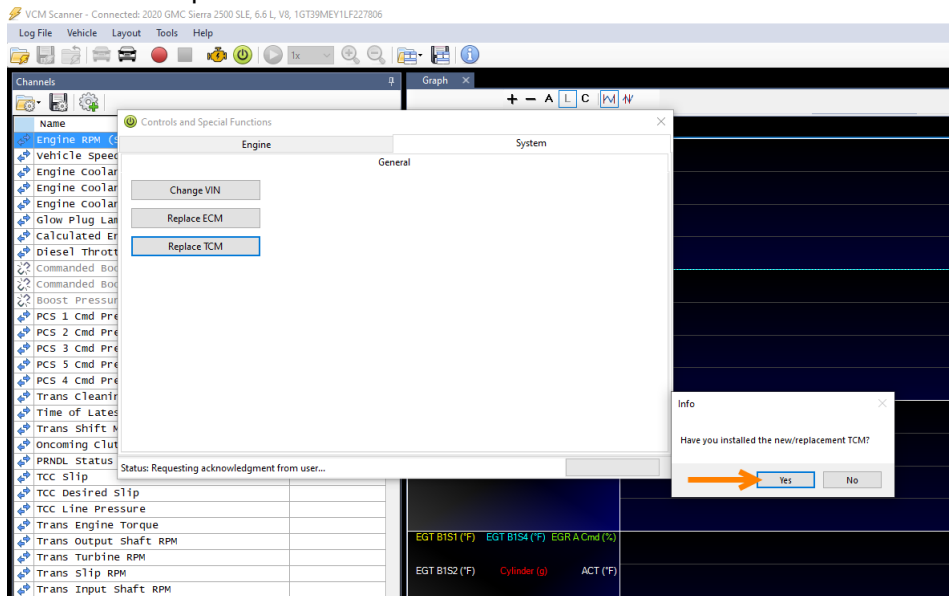


- a.
8. Select NO when asked if the Stock TCM is installed

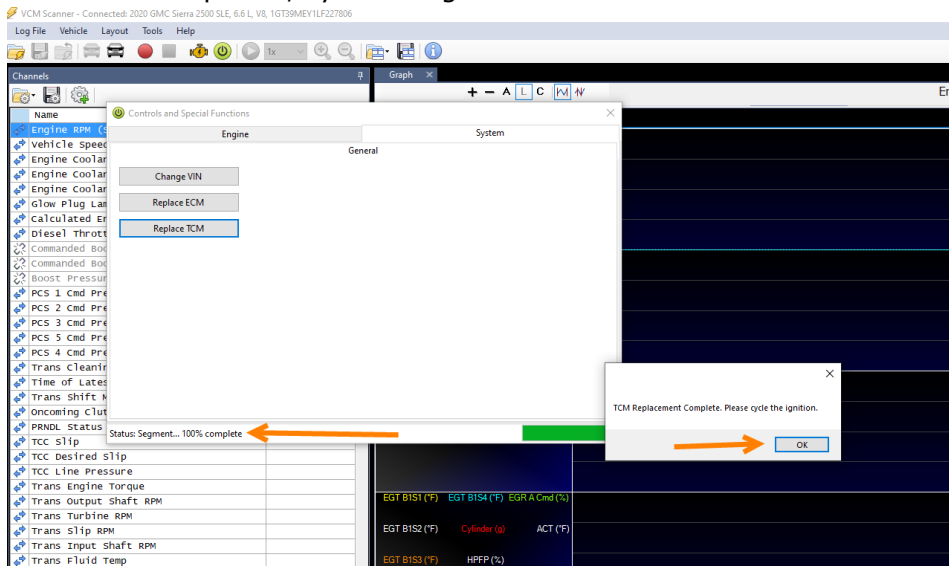
# Replace TCM Function with Pictures



a.  
9. Select Yes for the Replacement TCM



a.  
10. Once the write is completed, cycle the ignition.



a.  
11. If you are getting a check engine light and P0700 code, repeat steps 6-10