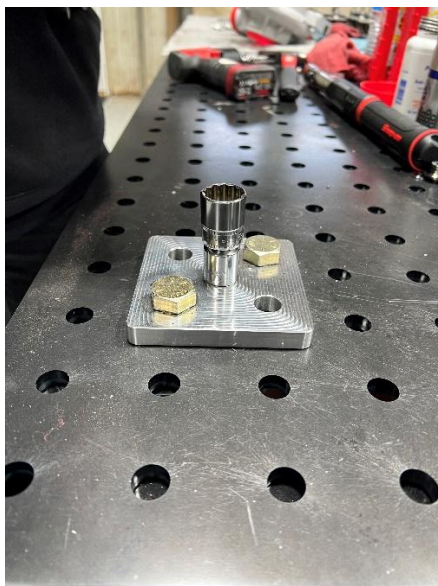


VSE FTR L5P Compressor Wheel Installation Instructions

- Remove the Turbo using the GM Turbo removal and install instructions below
 - [Click Here](#)
- Once the turbo is removed, using a 10mm socket or wrench, remove the five (5) bolts on the intake housing.



-
- With the intake housing now removed, place a 19mm socket in a vice or rig a stand to allow the turbine nut to sit in the socket vertically and stationary.



- Using a 13mm socket or wrench, loosen the compressor wheel nut (these are reverse threaded, turn the nut to the right to loosen) and remove the stock wheel
- Take your VSE FTR compressor wheel and begin threading it on the turbine rod (spinning the wheel to the left to tighten) Using a torque wrench, with a 13mm socket, tighten the FTR wheel down to 12 ft/lbs per GM spec. Make sure not to over tighten as it may bend the turbine shaft



-
- Once the wheel has been torqued, replace the intake housing, and insert the five (5) bolts.
- Using the GM Turbo removal and install instructions as before, install the turbo back on to the truck.